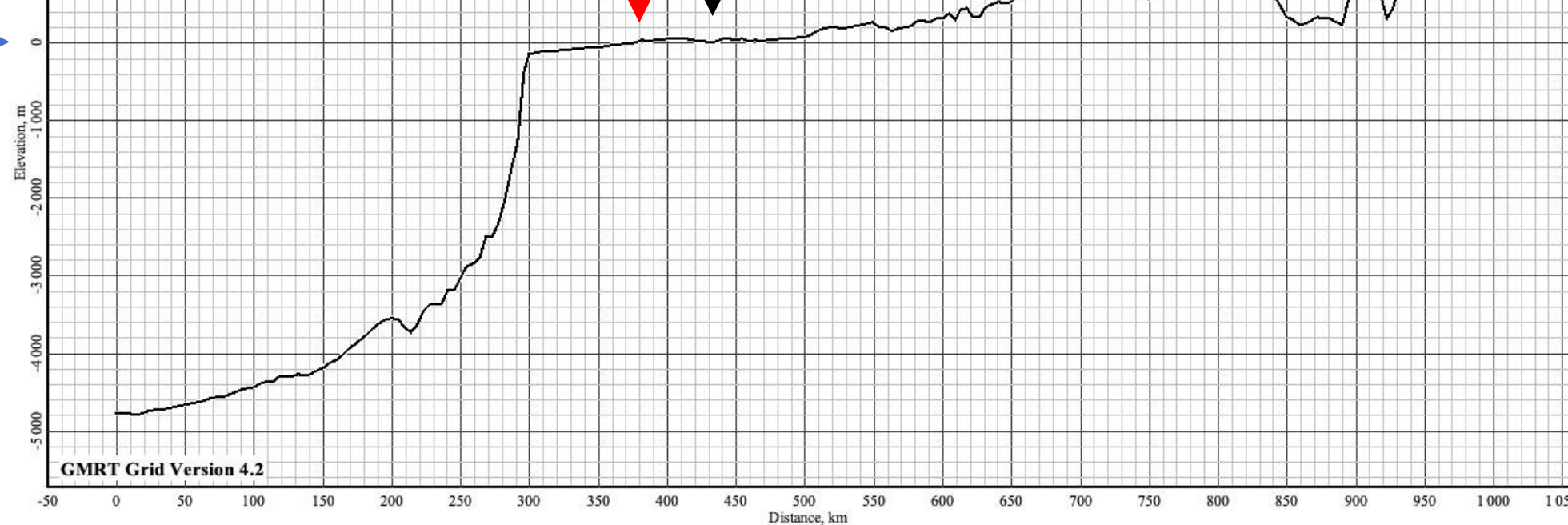
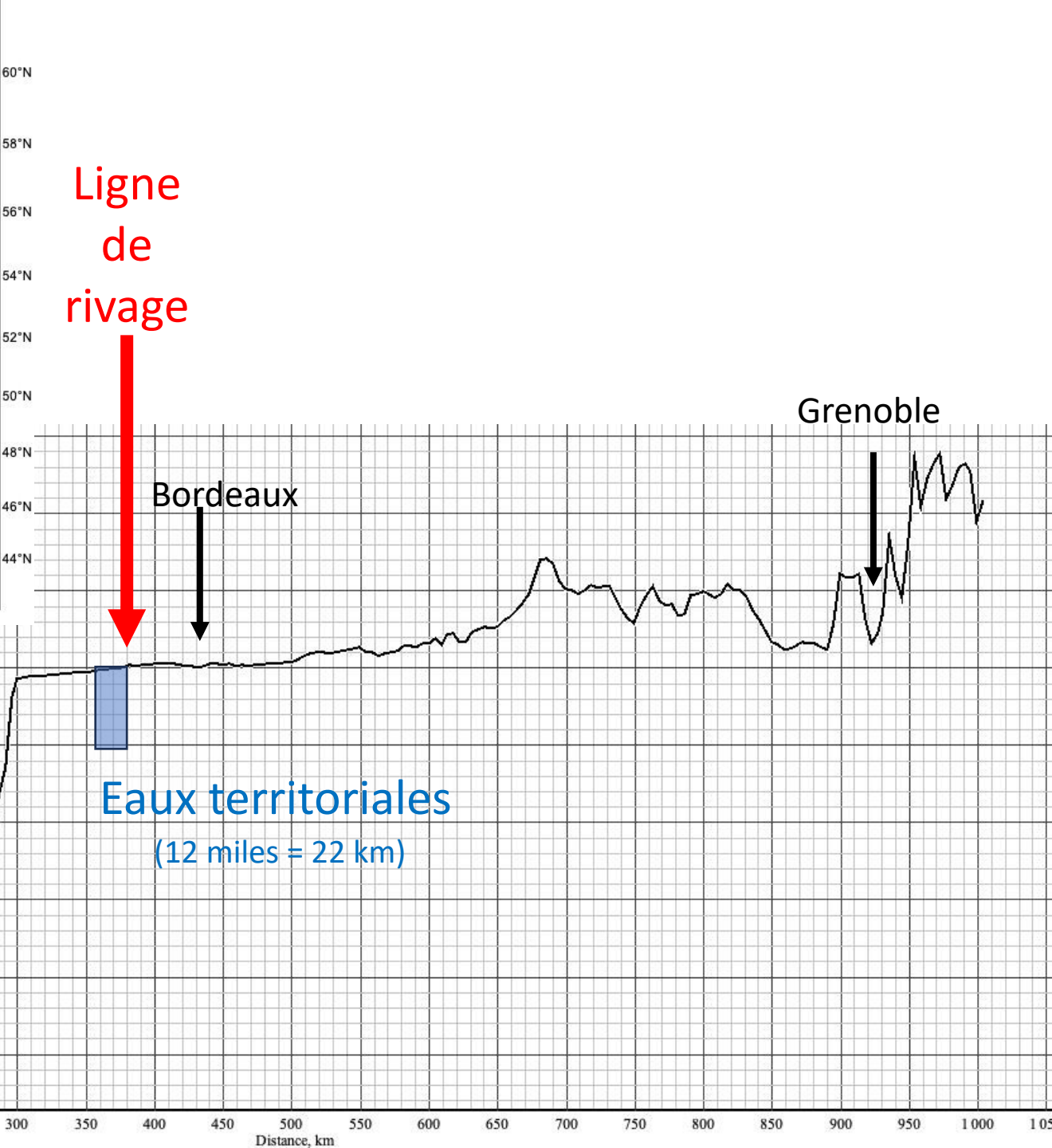
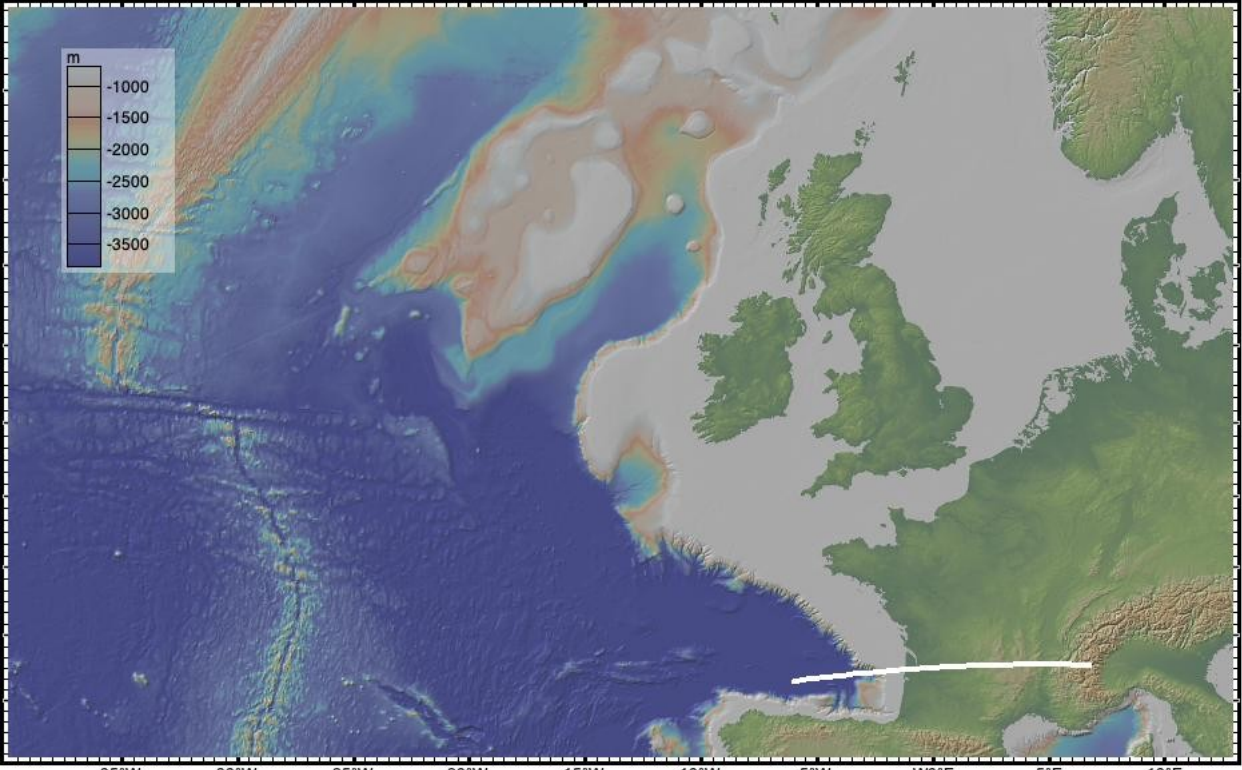


Niveau de la mer → 0





Niveau de la mer →

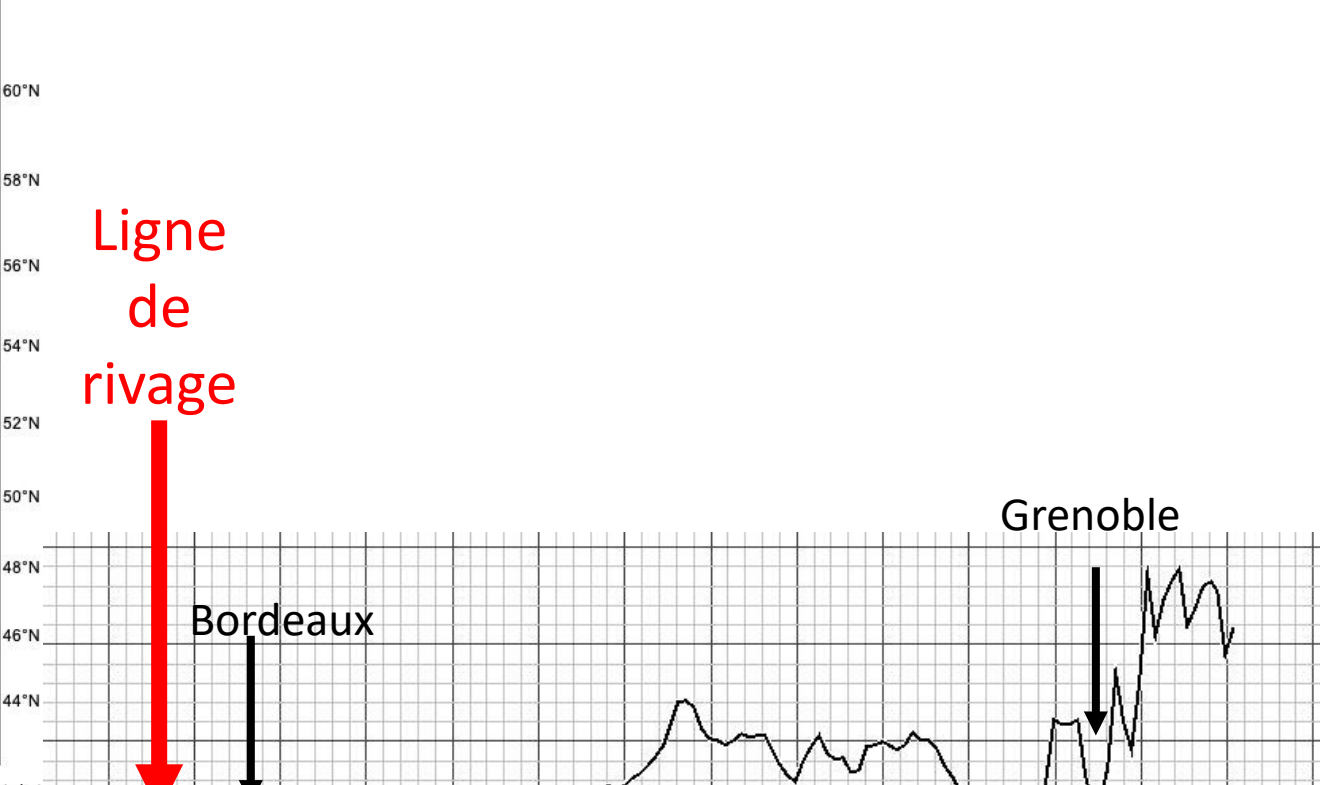
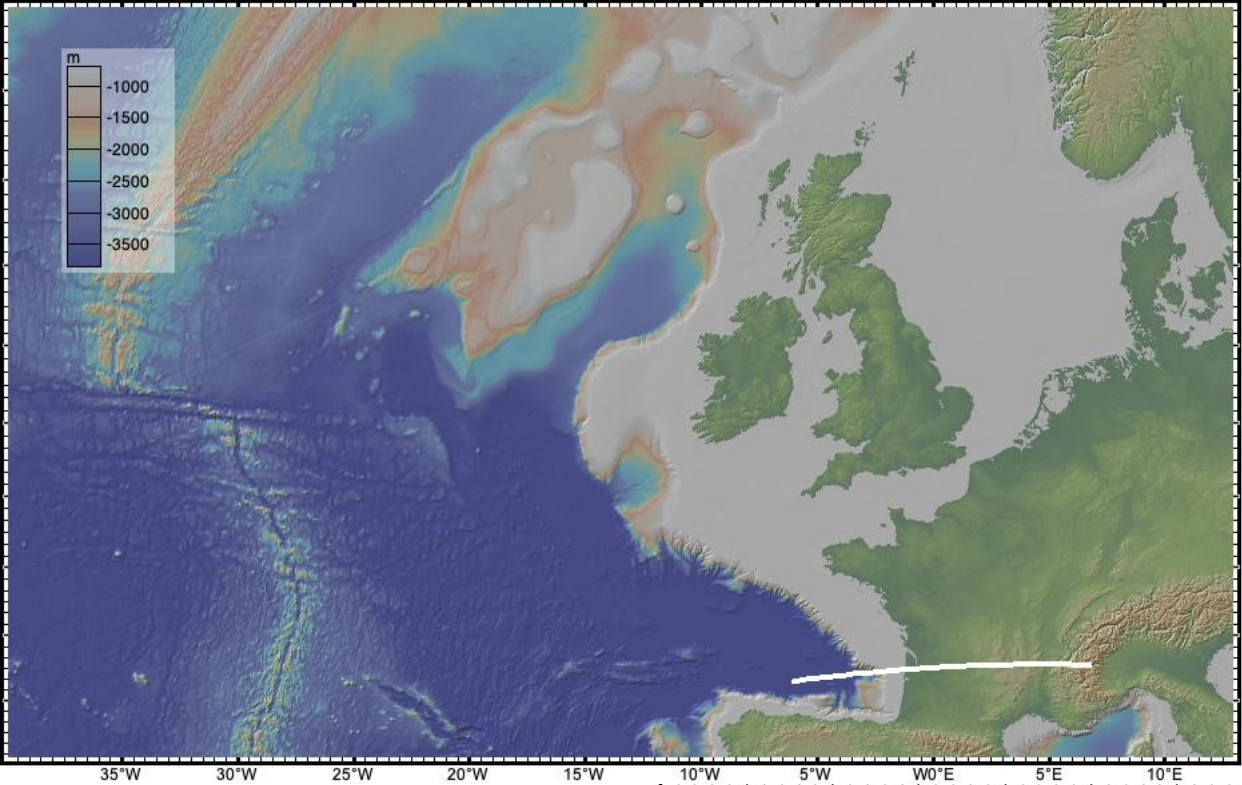
Ligne de rivage

Bordeaux

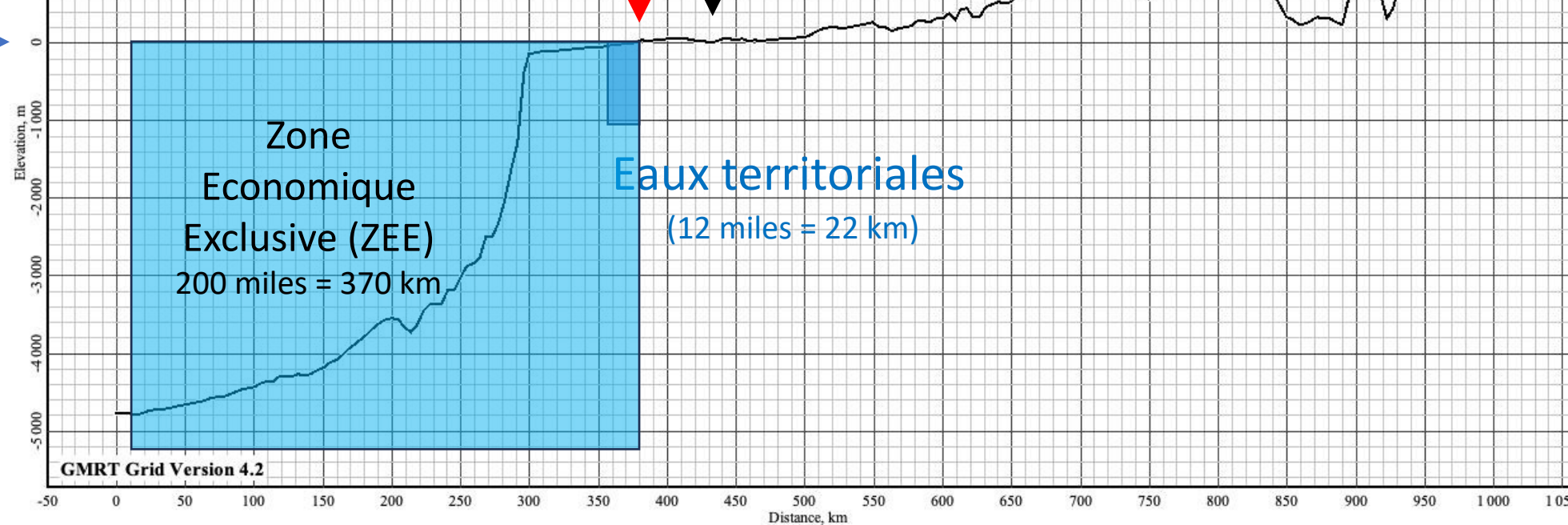
Grenoble

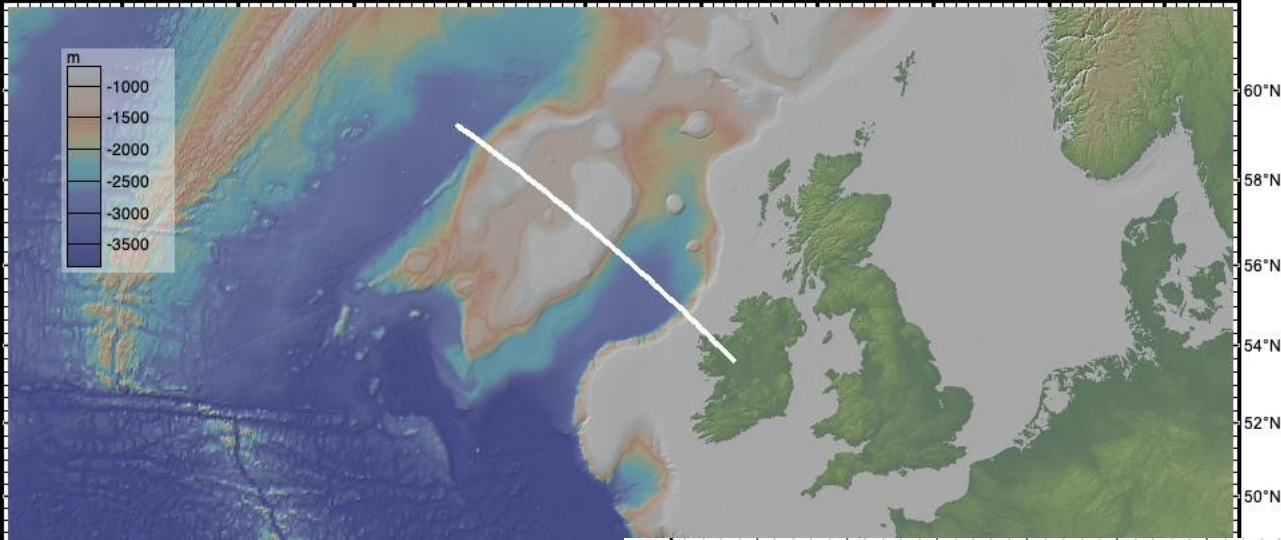
Eaux territoriales
(12 miles = 22 km)

GMRT Grid Version 4.2

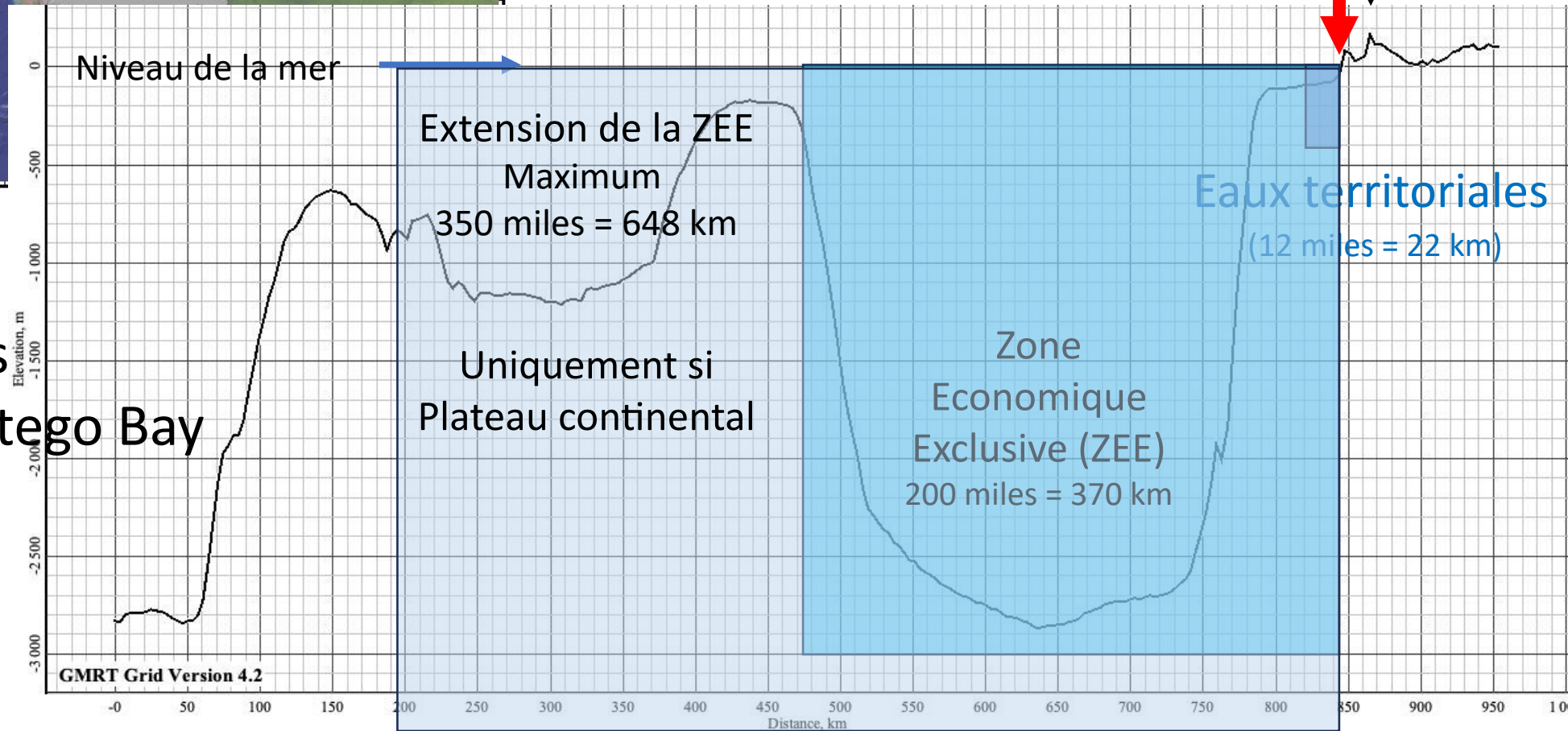


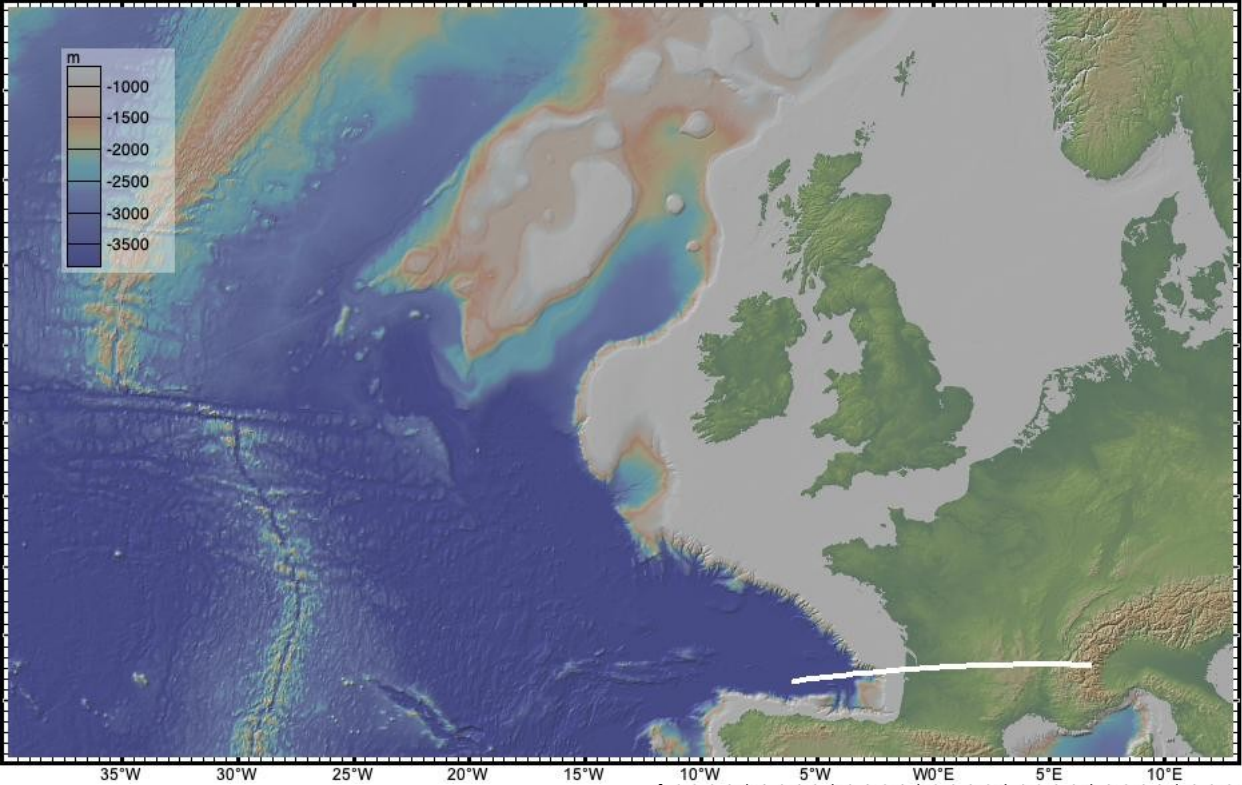
Niveau de la mer → 0





Au delà:
Eaux internationales
Convention de Montego Bay





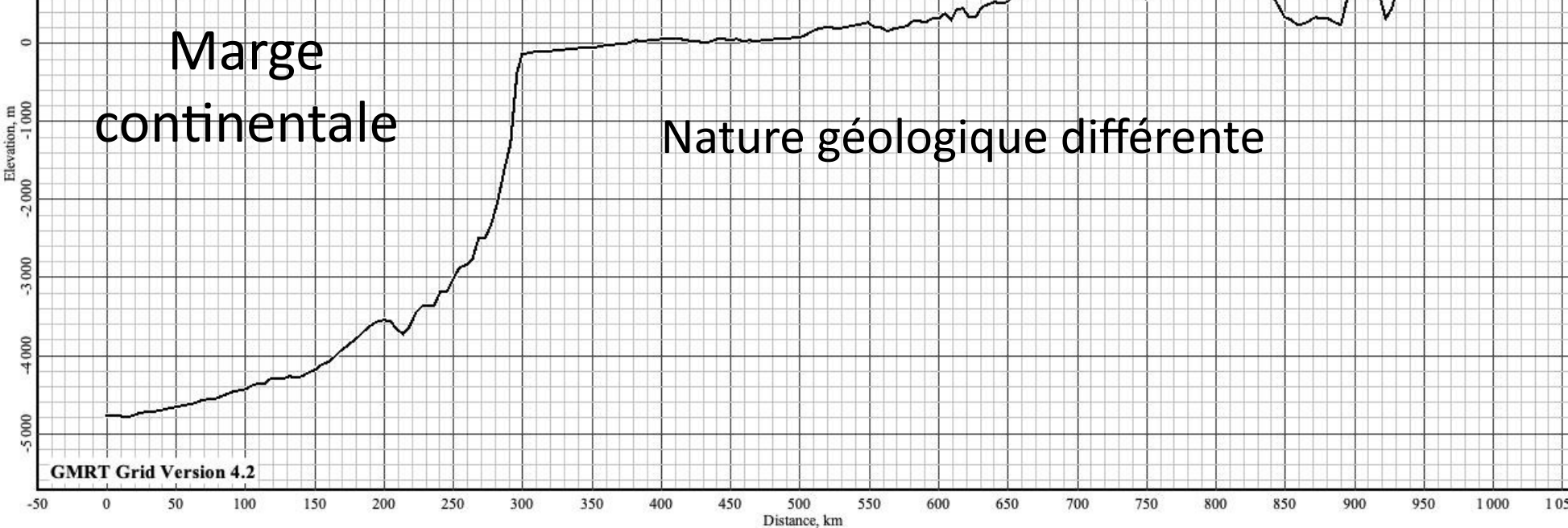
60°N
58°N
56°N
54°N
52°N
50°N
48°N
46°N
44°N

Croûte
continentale

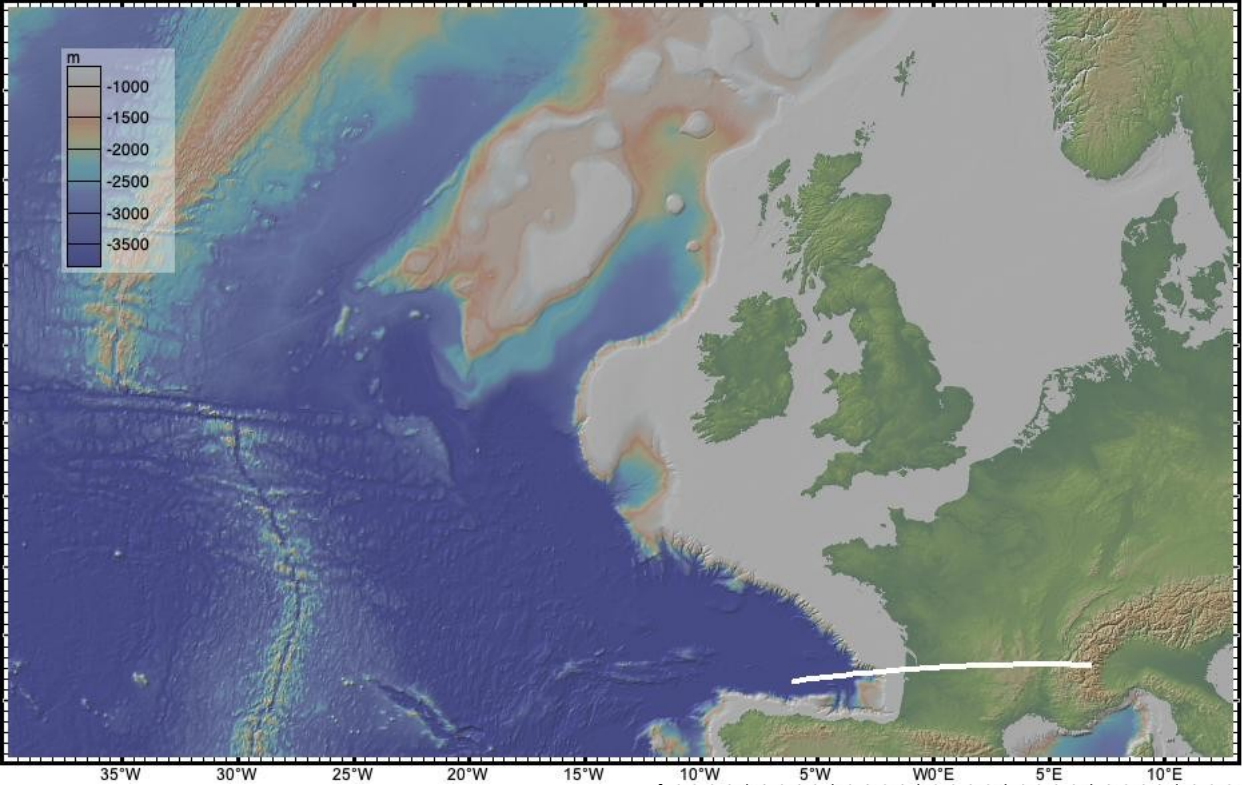
Croûte
océanique

Marge
continentale

Nature géologique différente



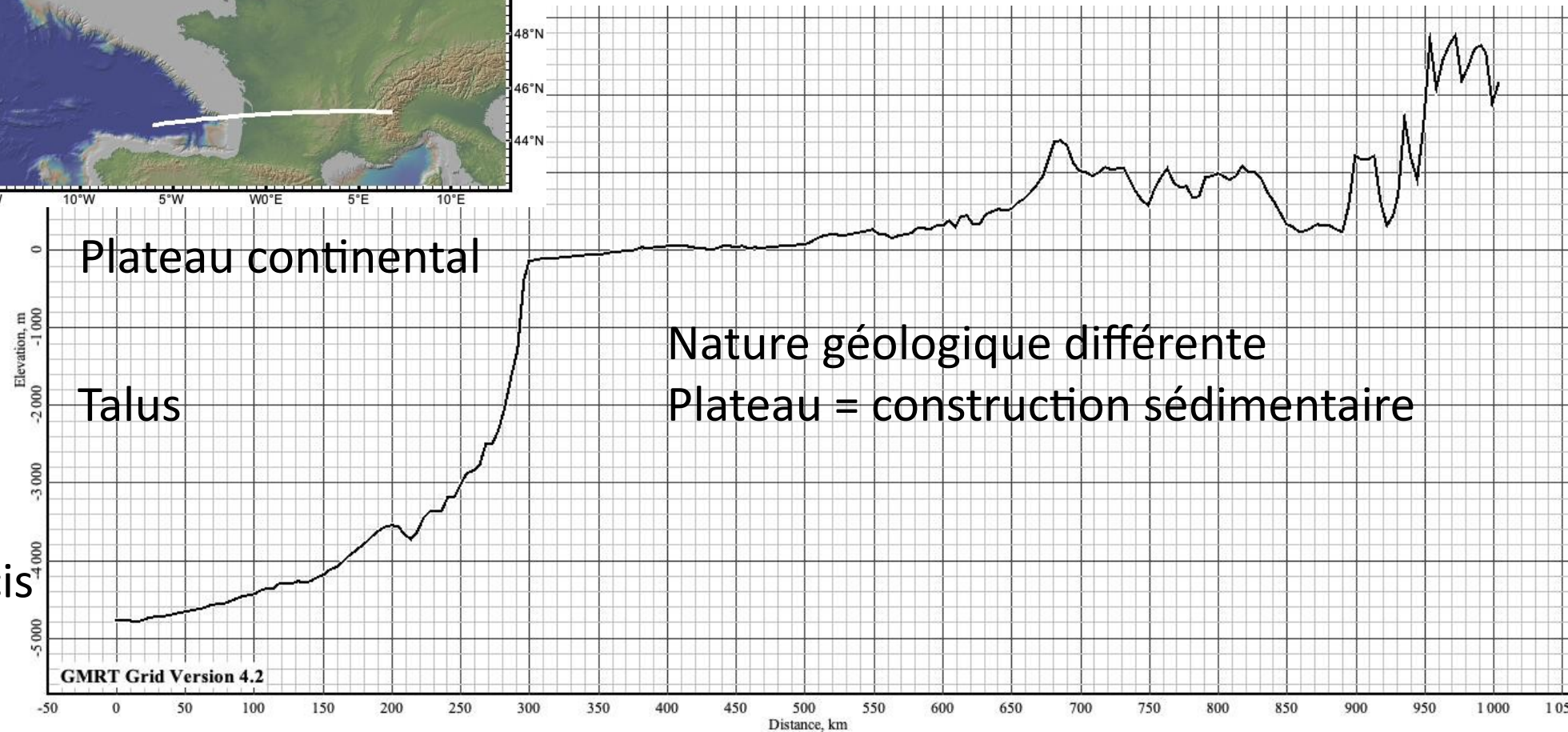
GMRT Grid Version 4.2

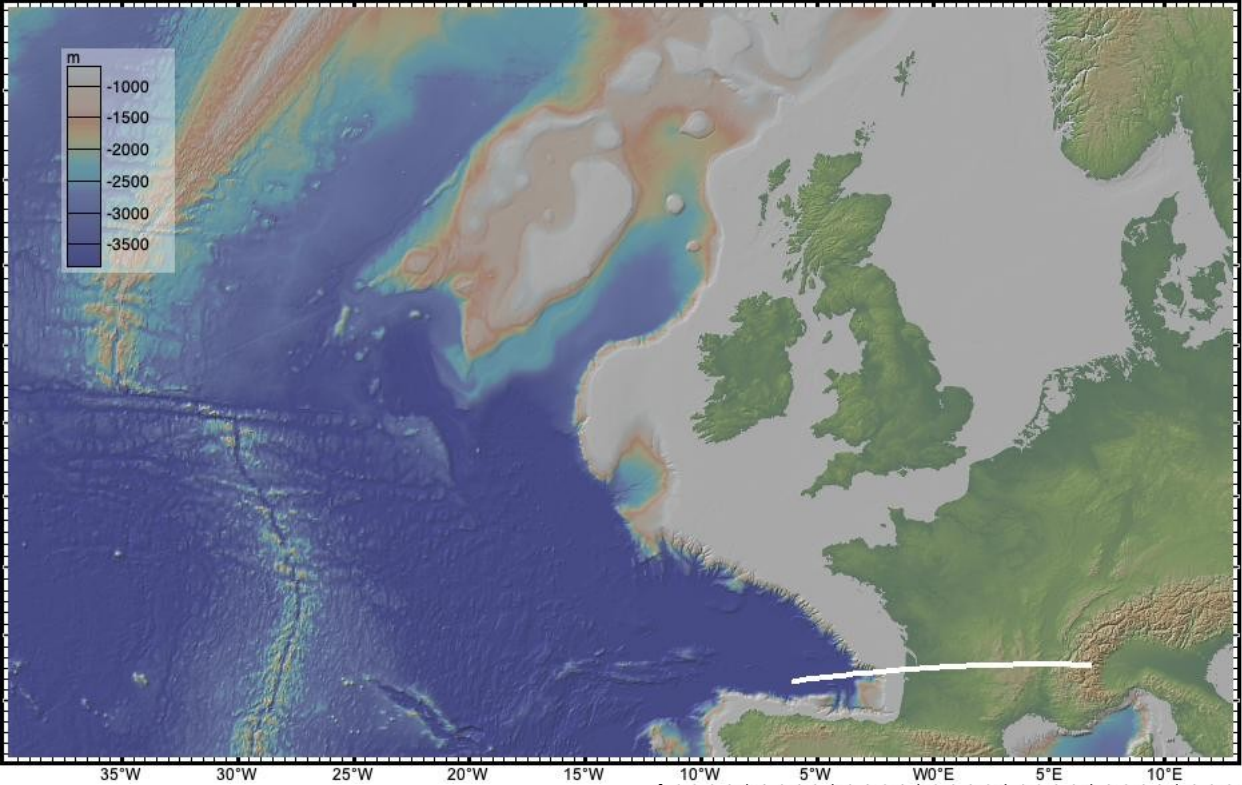


Croûte
continentale

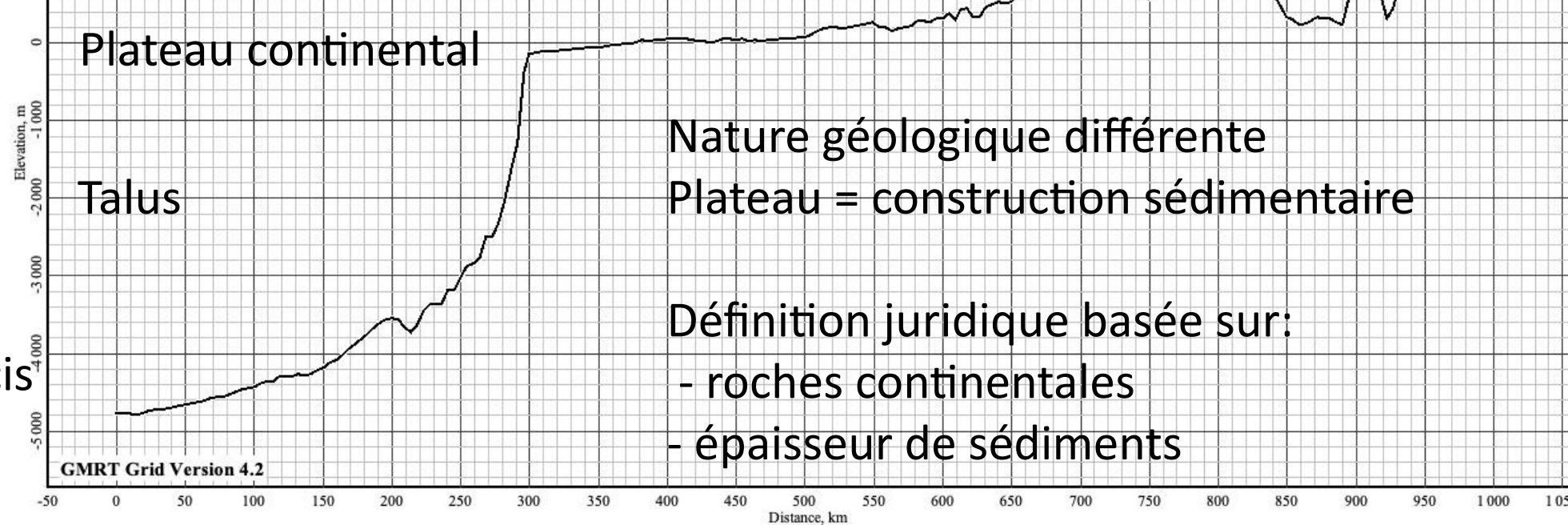
Croûte
océanique

Plaine abyssale / glaciés





Croûte
continentale

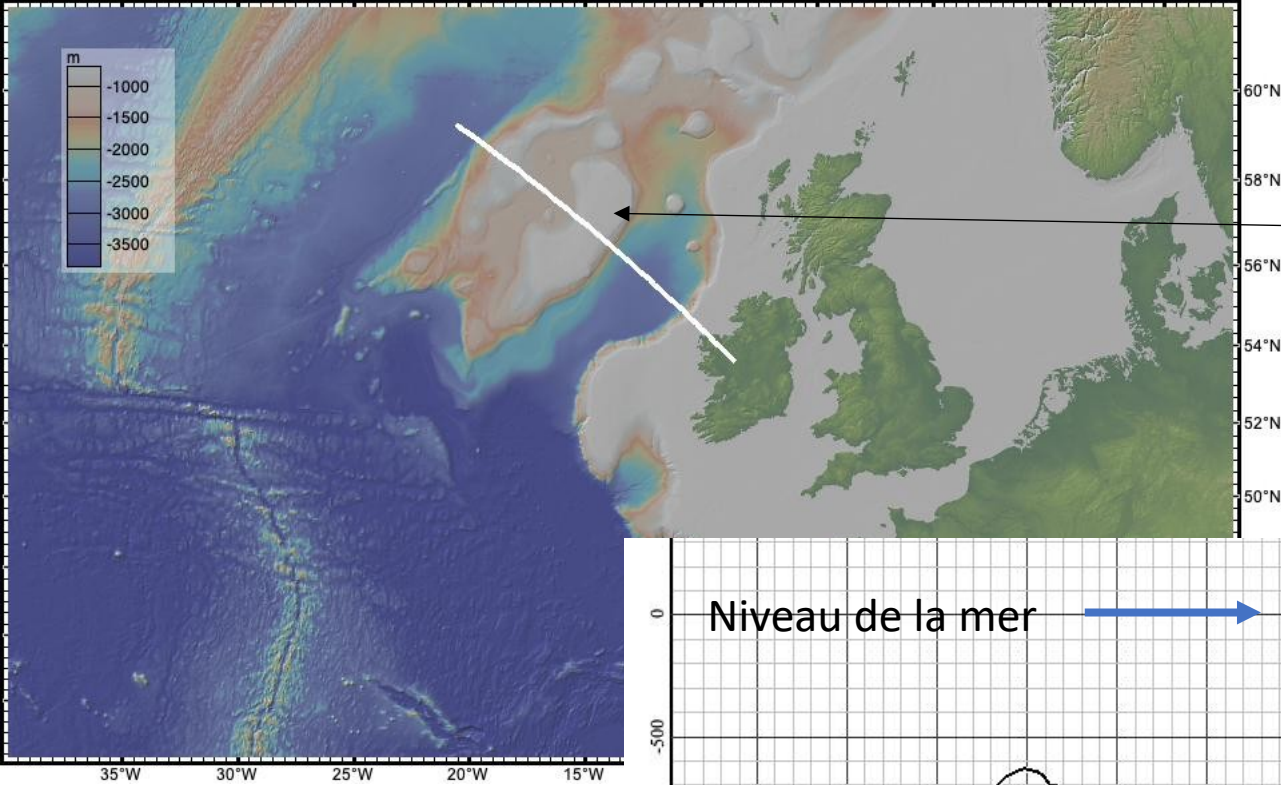


Croûte
océanique

Nature géologique différente
Plateau = construction sédimentaire

Définition juridique basée sur:

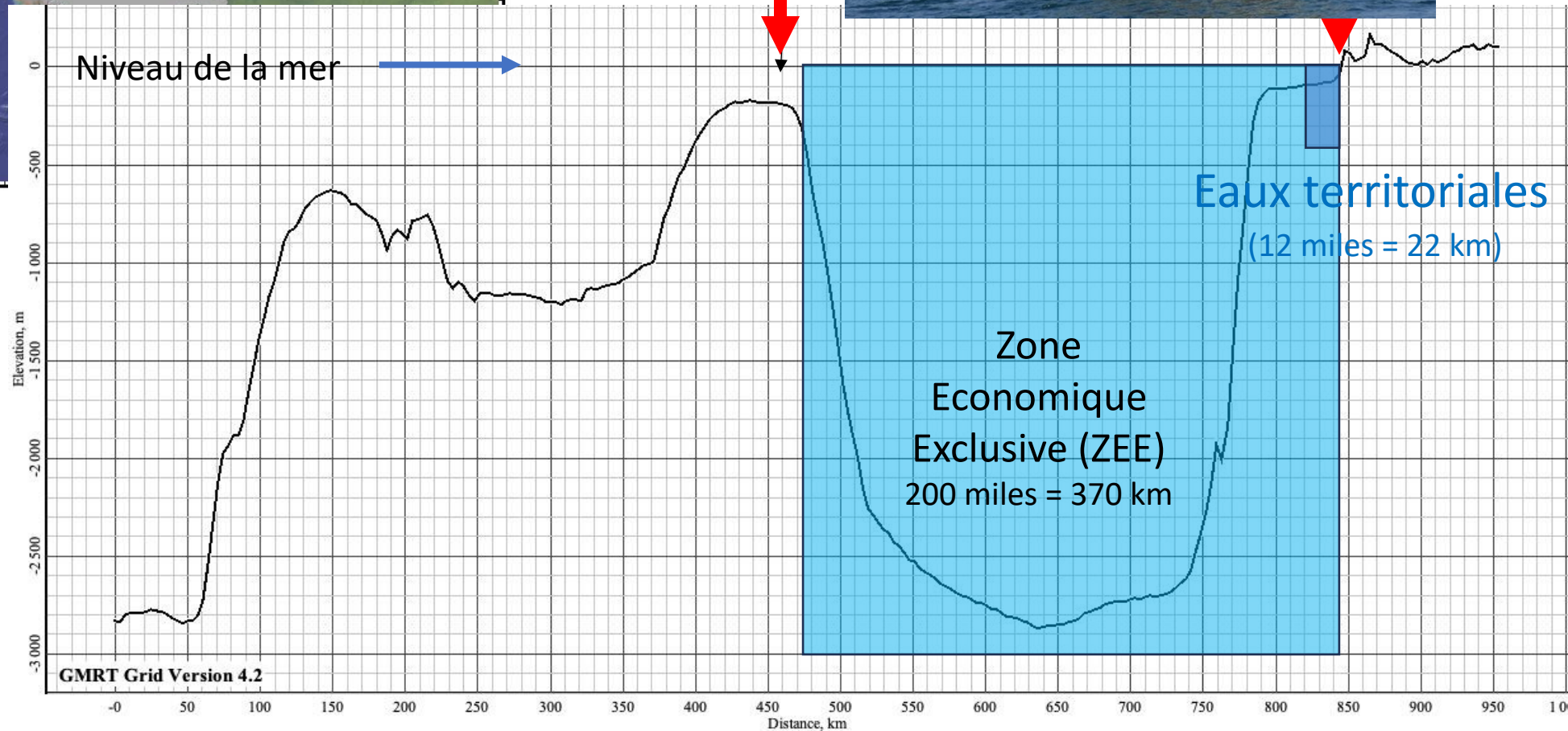
- roches continentales
- épaisseur de sédiments

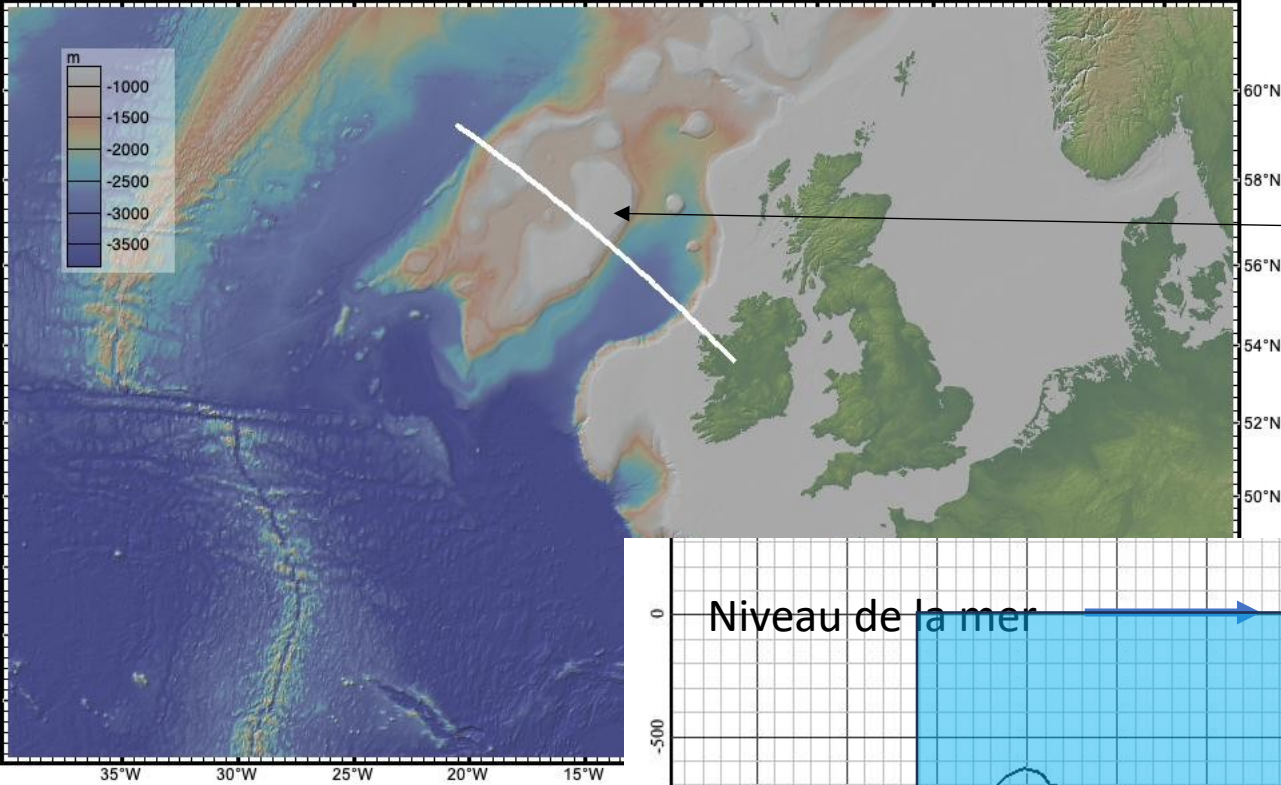


Rockall



nara

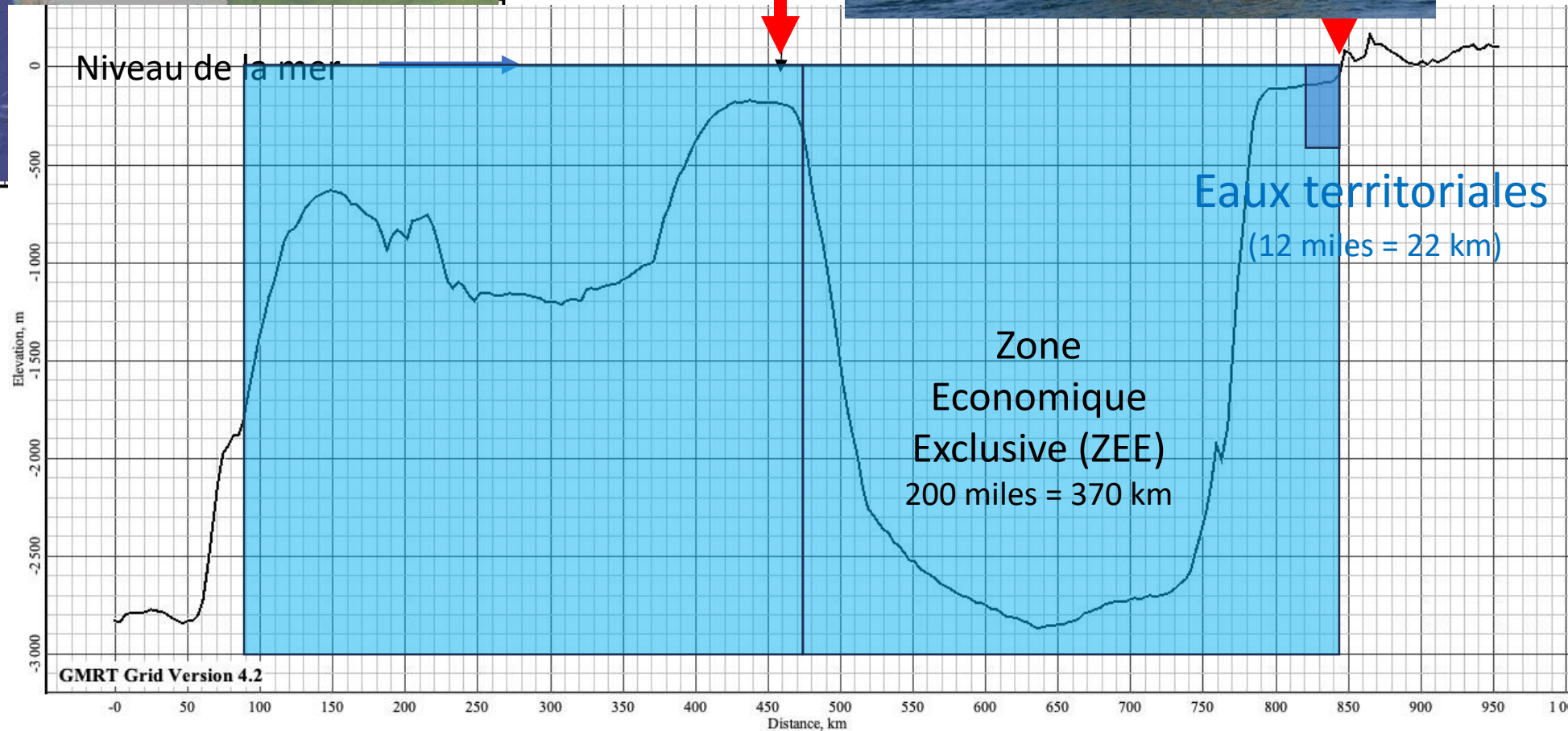




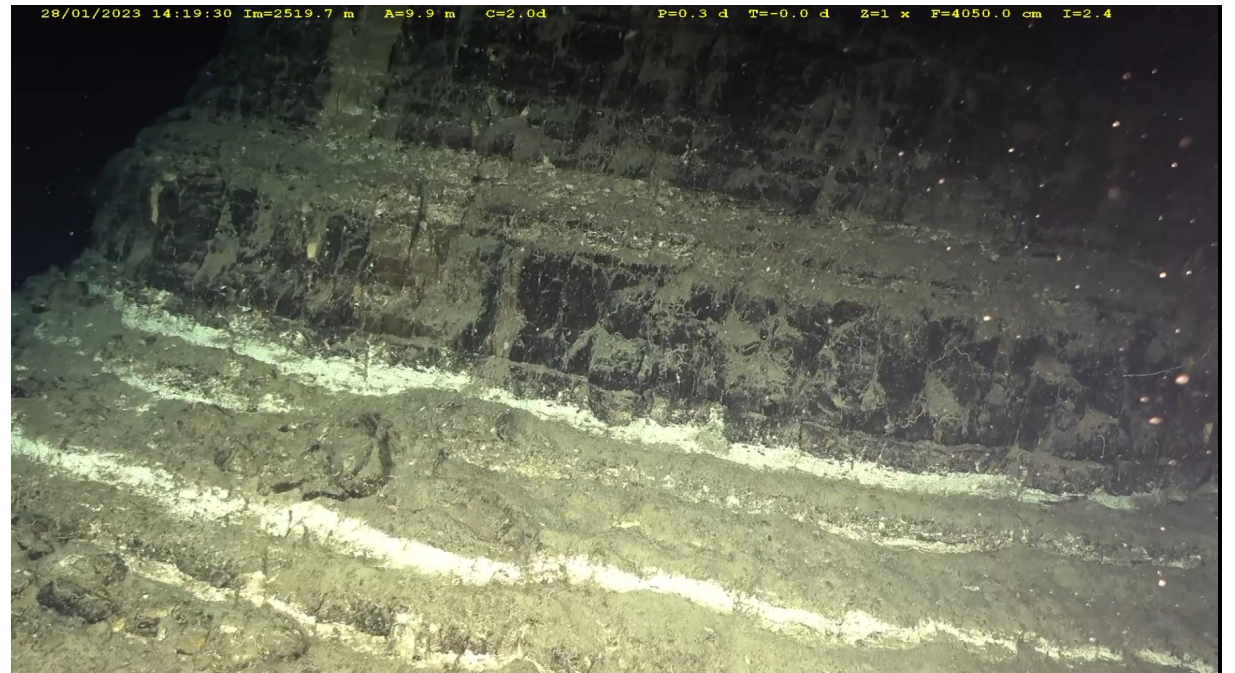
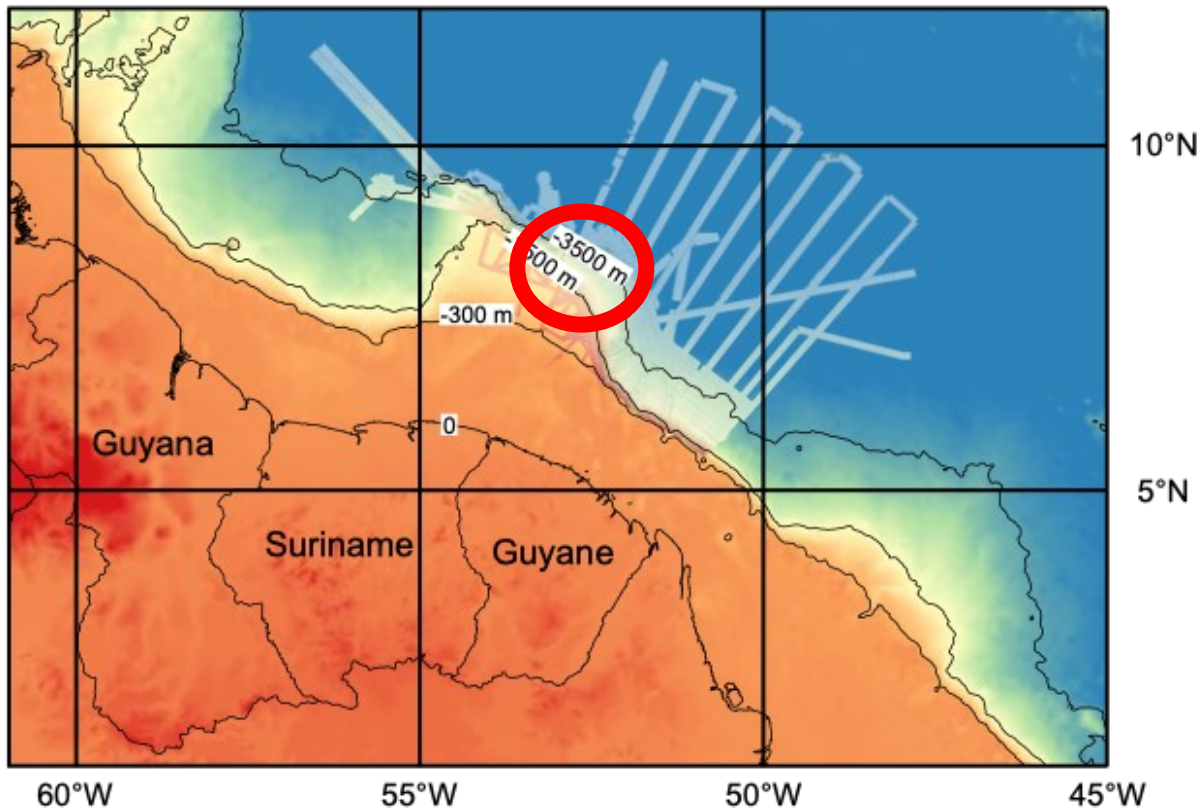
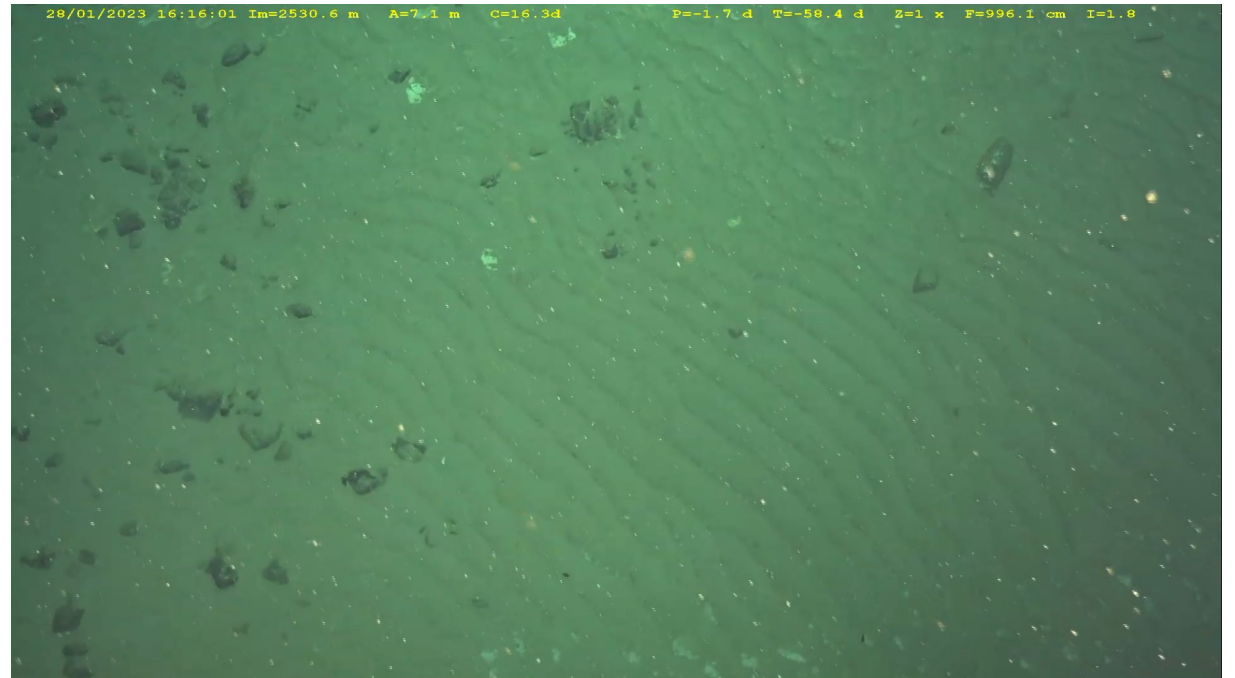
Rockall



nara



Mission DIADEM

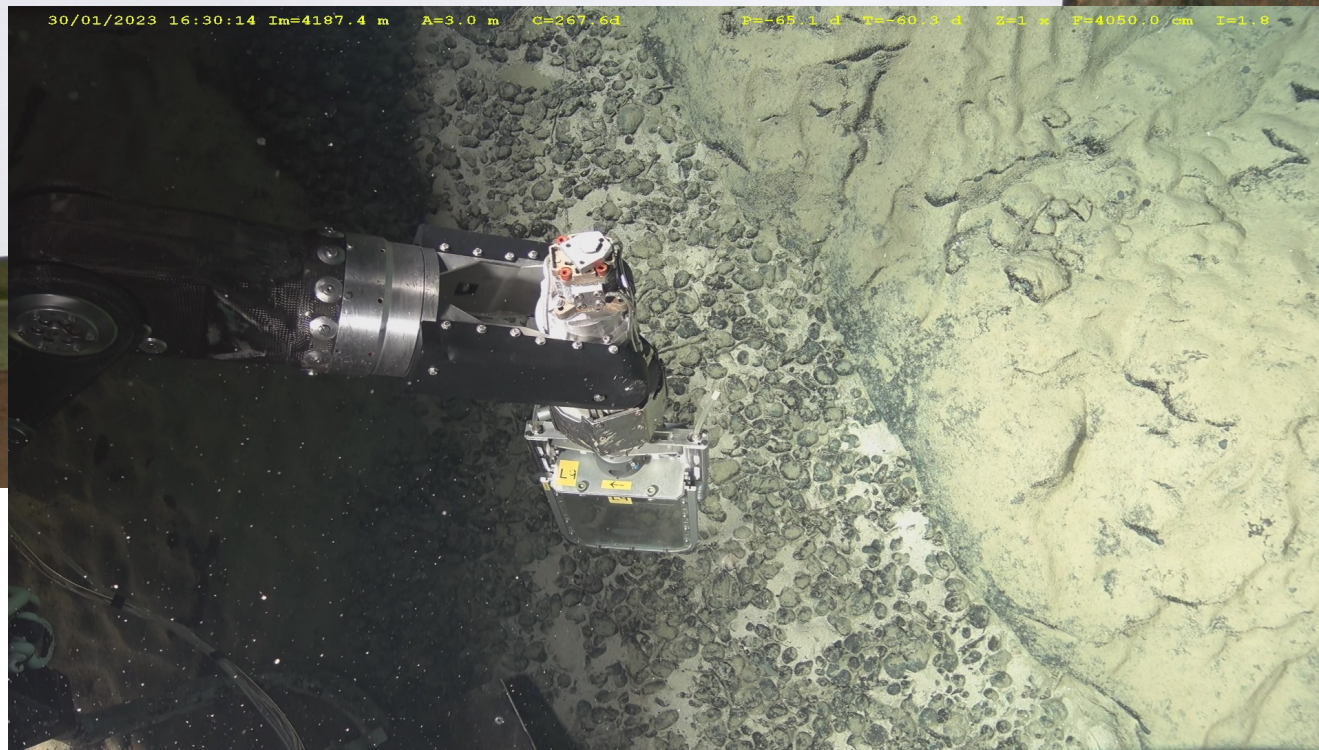


DRADEM - C2

20 cm



30/01/2023 16:30:14 Im=4187.4 m A=3.0 m C=267.6d P=-65.1 d T=60.3 d Z=1 x P=4050.0/cm I=1.8

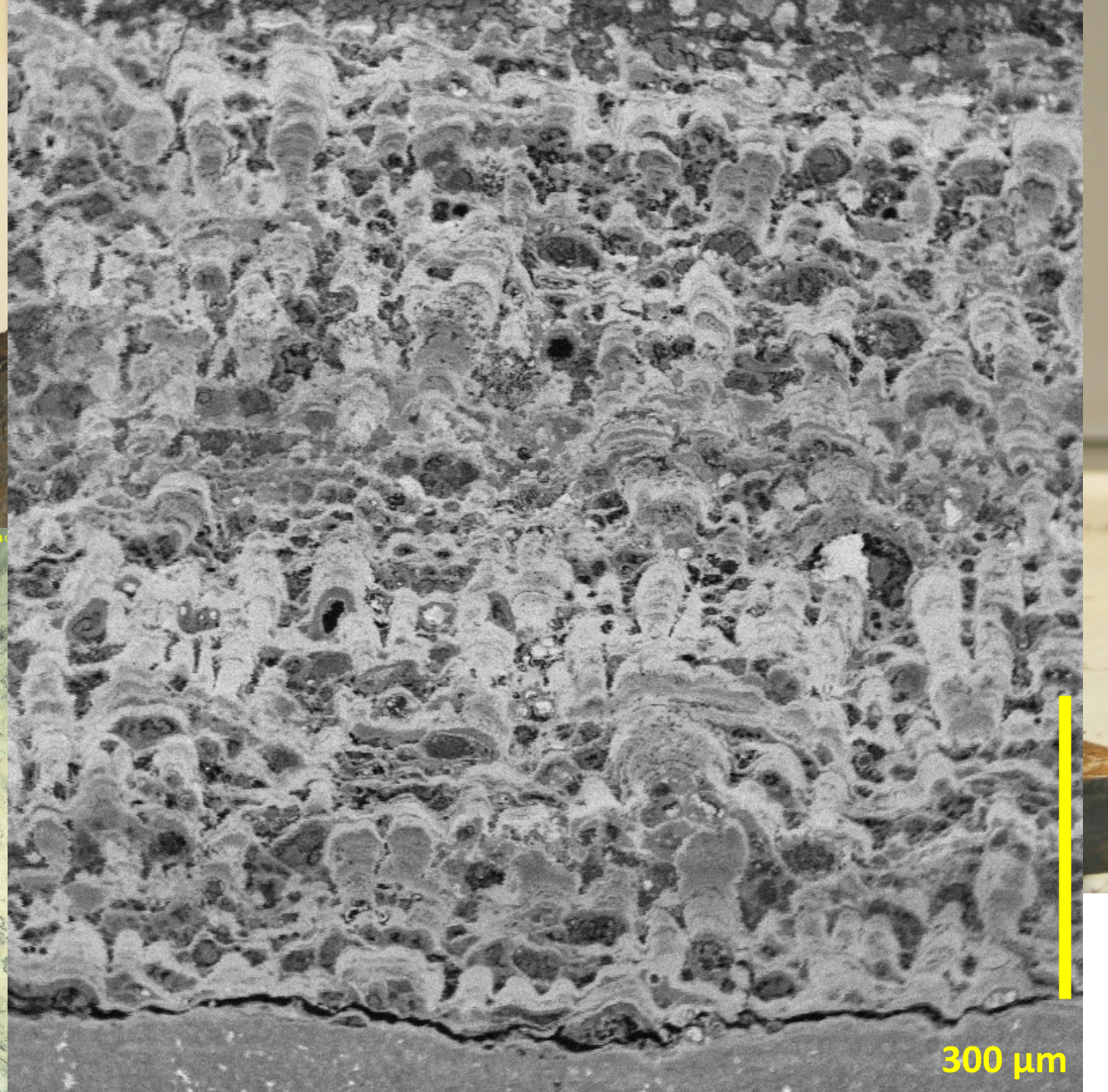
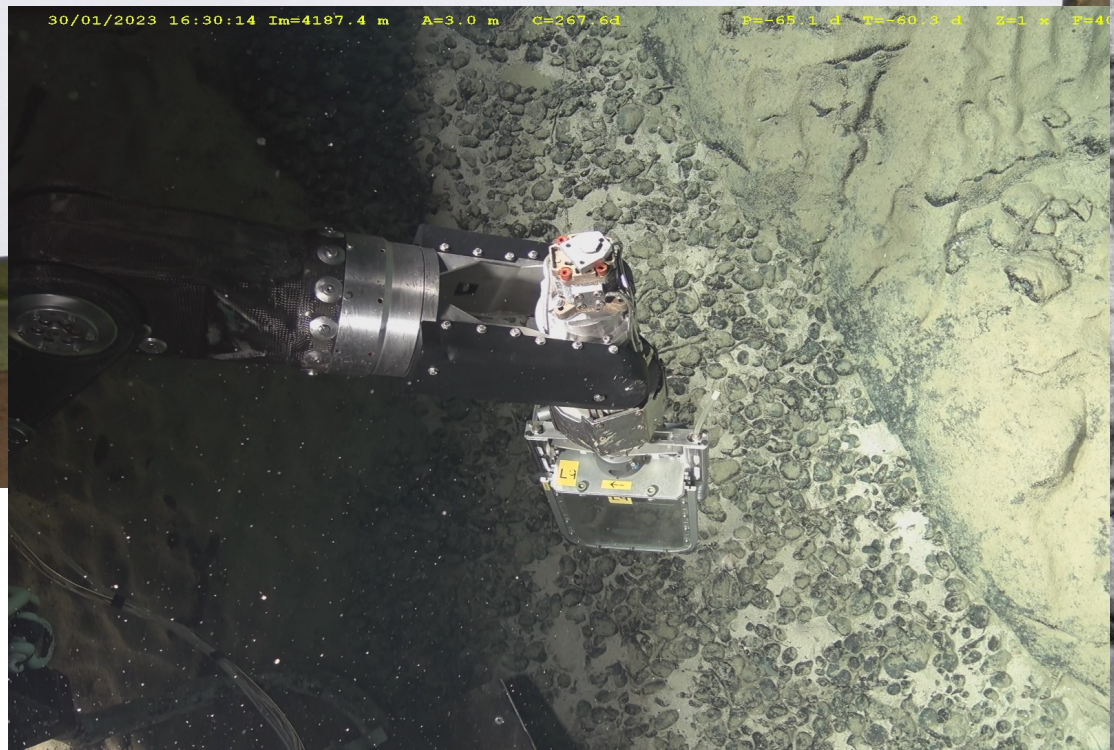


Nodules et encroûtements Fe + Mn

DRADEM - C2

20 cm

30/01/2023 16:30:14 Im=4187.4 m A=3.0 m C=267.6d P=-65.1 d T=60.3 d Z=1 x P940



300 μm